

X. Scanning Existing Ride Custom Back or Ride Custom Cushion for re-make or duplicate

How to scan existing Ride Custom Back for re-make or duplicate.

1. Take a photo of the rear of back, showing the location of the hardware and headrest mounts.



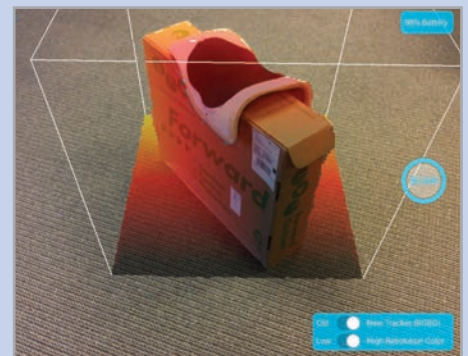
2. Remove the cover and take a photo of the inside of back, showing the location of all pads and enhanced reliefs.



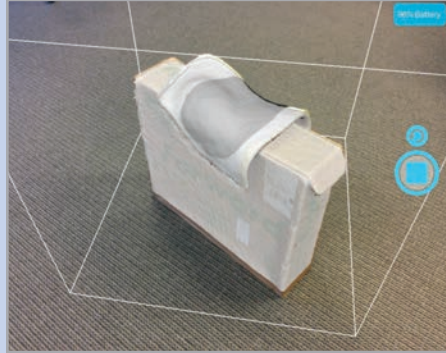
3. Remove the inner liner from the black outer shell. Place the liner, white side up, on an object to elevate it off of the floor or surface.



4. In the RideWorks client bin, select SCAN. Size the scanning cube so that the boundary extends just past the edges of the shape.



5. Press SCAN to begin scanning. Scan only the white plastic side of the backrest. Press the stop icon when finished.



6. After scanning, wait for RideWorks to process the color. Review your 3D scan and make sure the entire back surface is visible and there are no holes. Select SAVE when finished to save your model to the client bin.



How to scan existing Ride Custom Cushion for re-make or duplicate.

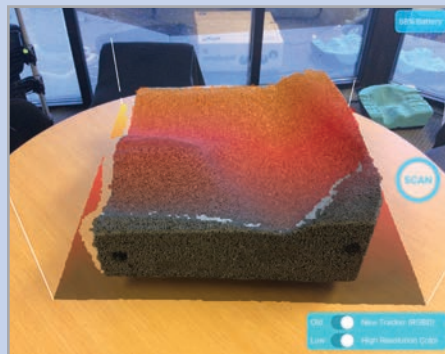
1. Remove the external cover and place the cushion on a flat surface.



2. Use a small box or object to elevate the cushion at least 1" above the flat surface.



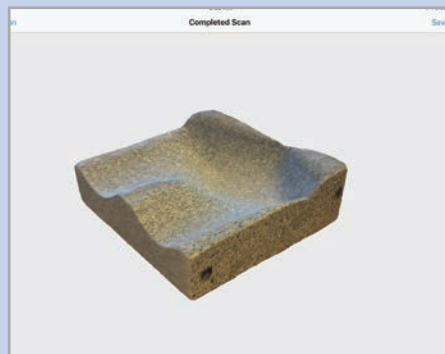
3. In the RideWorks client bin, select SCAN. Size the scanning cube boundary so that it extends just past the edges of the cushion.



4. Press SCAN to begin scanning. Slowly walk around the cushion and make sure the entire surface is covered in white. Press the stop icon to finish scanning.



5. After scanning, wait for RideWorks to process the color. Review your 3D scan and make sure there are no holes. Select SAVE when finished to save your model to the client bin.



6. Record the following cushion measurements on page 2 of the order form:

- ☐ Length in inches
- ☐ Right and left height at corners:
 - front left
 - front right
 - rear left
 - rear right
- ☐ Indicate whether cushion is used on a sling seat.

XI. How to scan an impression foam shape for a Ride Custom Cushion 2

1. Place the Simulation Pan on a flat surface in a well-lit room.



2. In the RideWorks app, size the scanning cube so that it extends just past the boundaries of the Simulation Pan.



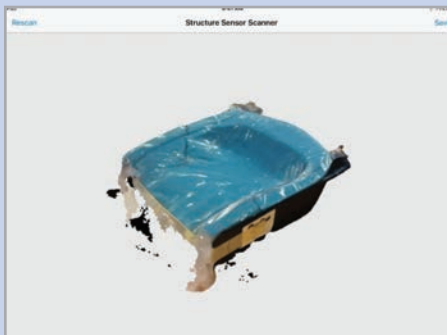
3. While scanning, make sure to capture all the way to the bottom of the Simulation Pan.



4. Before finishing the scan, check that there are no holes in the 3D scan of the impression foam surface.



5. Preview your 3D scan and rescan if there are any large holes or major imperfections.



6. Save your 3D scan to the RideWorks app.

