

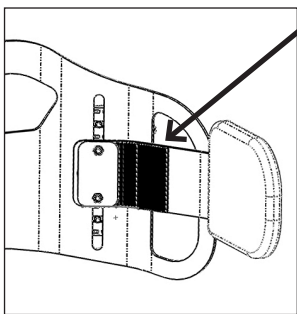


► **Ride Designs®**  
 a branch of Aspen Seating, LLC  
 8100 SouthPark Way, C400  
 Littleton, Colorado 80120 USA  
 toll-free: 866.781.1633  
 phone: 303.781.1633  
 www.ridedesigns.com

# Fixed and Swing-Away Lateral Trunk Support Assembly Instructions

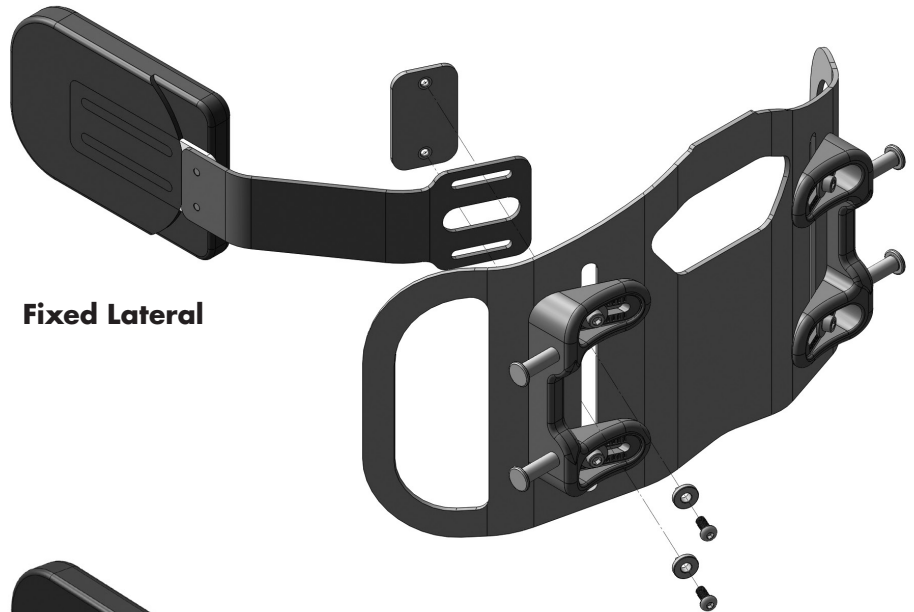
Remove back cushion then use a 5mm allen wrench to attach the Lateral Trunk Support to the back shell as shown.

Make sure the square portion of the washer fits inside the vertical slots on the back shell.

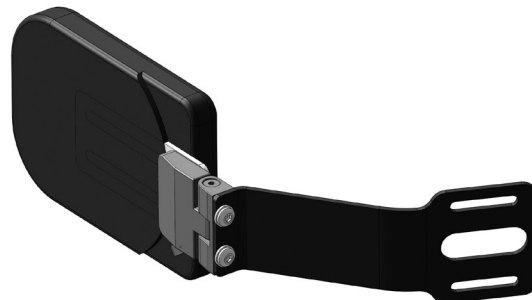


Attach hook patch included to better secure back cushion.

**Note possible location options depending on back size below.**



**Fixed Lateral**



**Swing-Away Lateral**

Follow same installation method as depicted above.  
 NOTE: Swing-away lateral release button faces down.

## Large and Small Size Lateral Location Options

High Mounted Location for 10 - 20" back widths



Center Mounted Location for 15 - 20" Java Backs only



Low Mounted Location for 10 - 20" back widths

